

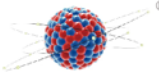
Anti-NPHS2 Antibody

NH-R-51-33

Product Type: Recombinant Rabbit monoclonal IgG, primary antibodies
Species reactivity: Human, Mouse, Rat
Applications: IF-Tissue Clearing
Clone number: JB51-33

Description:	Plays a role in the regulation of glomerular permeability, acting probably as a linker between the plasma membrane and the cytoskeleton. Almost exclusively expressed in the podocytes of fetal and mature kidney glomeruli.
Immunogen:	Synthetic peptide within Human NPHS2 aa 334-383 / 383.
Positive control:	Mouse kidney
Subcellular location:	Cell membrane. Endoplasmicreticulum.
Recommended Dilutions:	
IF-Tissue Clearing	1:50
Adaptive Clearing kit	Tissue clearing kit (Hydrophilic) (Cat#:NH-CR-210701)
Storage Buffer:	1*TBS (pH7.4), 0.05% BSA, 40% Glycerol. Preservative: 0.05% SodiumAzide.
Storage Instruction:	Store at +4 °C after thawing. Aliquot store at -20 °C or -80 °C. Avoid repeated freeze / thaw cycles.
Purity:	Protein A affinity purified





Images

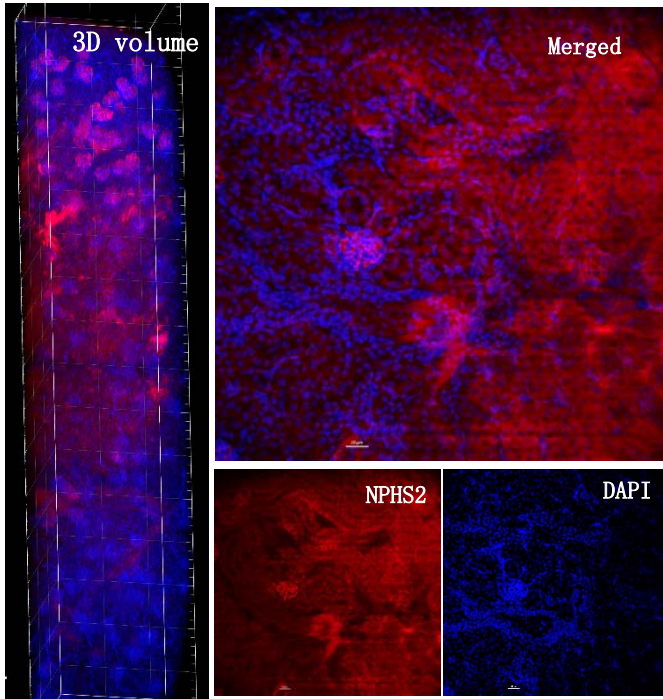


Fig1: Immunofluorescence analysis of fresh mouse kidney tissue labeling NPHS2 (NH-R-51-33) and DAPI at 1/50、1/100 dilution respectively.

The kidney of mouse was transparented with Tissue Clearing Kit(Hydrophilic) (Cat#:NH-CR-210701), the tissues were blocked for 4 hours at 4°C, and then probed with antibodies (NH-R-51-33, 1/50;DAPI, 1:100) for 5 days at room temperature, and Fluor® 488-conjugated AffiniPure VHH Fragment Alpaca Anti-Rabbit IgG (H+L) was used as the secondary antibody. after washing with 10% PBST for 20 minutes, and then wash with 1x PBS for 3 times for 2 hours each time. Three dimensional imaging acquisition was performed with Nuohai LS18.

